

BARCALO-BUFFALO

AIRPLANE PARTS

CATALOGUE



Barcalo Manufacturing Company
BUFFALO, NEW YORK **U. S. A.**

BARCALO-BUFFALO



AIRPLANE PARTS CATALOGUE, NO. 1

ISSUED FEBRUARY 1, 1918

BARCALO MANUFACTURING COMPANY

BUFFALO, N. Y., U. S. A.

INTRODUCTION



THE position of the Barcalo Manufacturing Company in the Airplane industry is unique. From the time that the Allied Governments began to use Airplanes, and the City of Buffalo became a center for the manufacture of Airplanes, we have been making parts. We have grown up with the industry. Naturally we have built up an organization for the production of Airplane Parts which is thoroughly trained and accustomed to work according to the exacting standards required. Our work has been more particularly in the making of forgings and in machining and finishing. We are doing considerable stamping and are in a position to figure on Pressed Steel Stampings. The Inspection Bureau of the Signal Equipment Division maintains inspectors at our plant so that all work is inspected before it is shipped.

☪ We invite inquiries and wish to call attention to the fact that we are in a position to quote on parts not shown in this catalogue. This is simply an attempt at collecting and illustrating certain parts that we have made so that we can put this information before the Airplane builders and assist them in placing their orders. We will add new pages from time to time which we will send you, and ask that you insert them in your copy of the catalogue as soon as received.

INDEX

DESCRIPTION	PART NUMBER	PAGE
Belt Buckles	1963	6
“ “	13587	6
Canadian Belt Buckle	1268-1275	6
Eyebolt	4178-1 to 45	5
“	10473-1 to 45	5
“	5054-1 to 45	5

NOTE: When ordering, mention dash number to indicate length of eyebolt required.

Hinge	5598	8
“	5597	8
“	10310	8
“	10064	7
“	10067	7
“	10325	11
“	6304	15
“	4155	15
“	4157	15
Shackles	4378-1-2-3-4-	4
“	4379-1-2-3-4-	4
“	5535-1-2-3-4-	4
“	12956-1-2-3-4-	4

NOTE: When ordering, give dash number to indicate size of drill and space.

Strut Ends	12247	11
“ “	7669	11
“ “	12778	11

DESCRIPTION	PART NUMBER	PAGE
Strut Ends	11158	12
“ “	12630	12
“ “	10028	12
“ “	15242	12
Washer Plate	4590	13
“ “	4591	13
“ “	5055	13
Wing Post	14555	9
“ “	14554	9
“ “	4690	15
“ “	4583	10
“ “	6713	10

MISCELLANEOUS PARTS

Magneto Switch	6375	15
Spider	42604	12
Starter Gear	41962	14
“ “	41963	14
Thimbles	13135-2-3-4-5-6-7-	4

NOTE: When ordering give dash number to indicate size of thimble desired.

Saddle	1186	14
Tail Bearing	12588	14
“ “	14658	14
Wrench	42538	9
Rear A Brace	14533	9

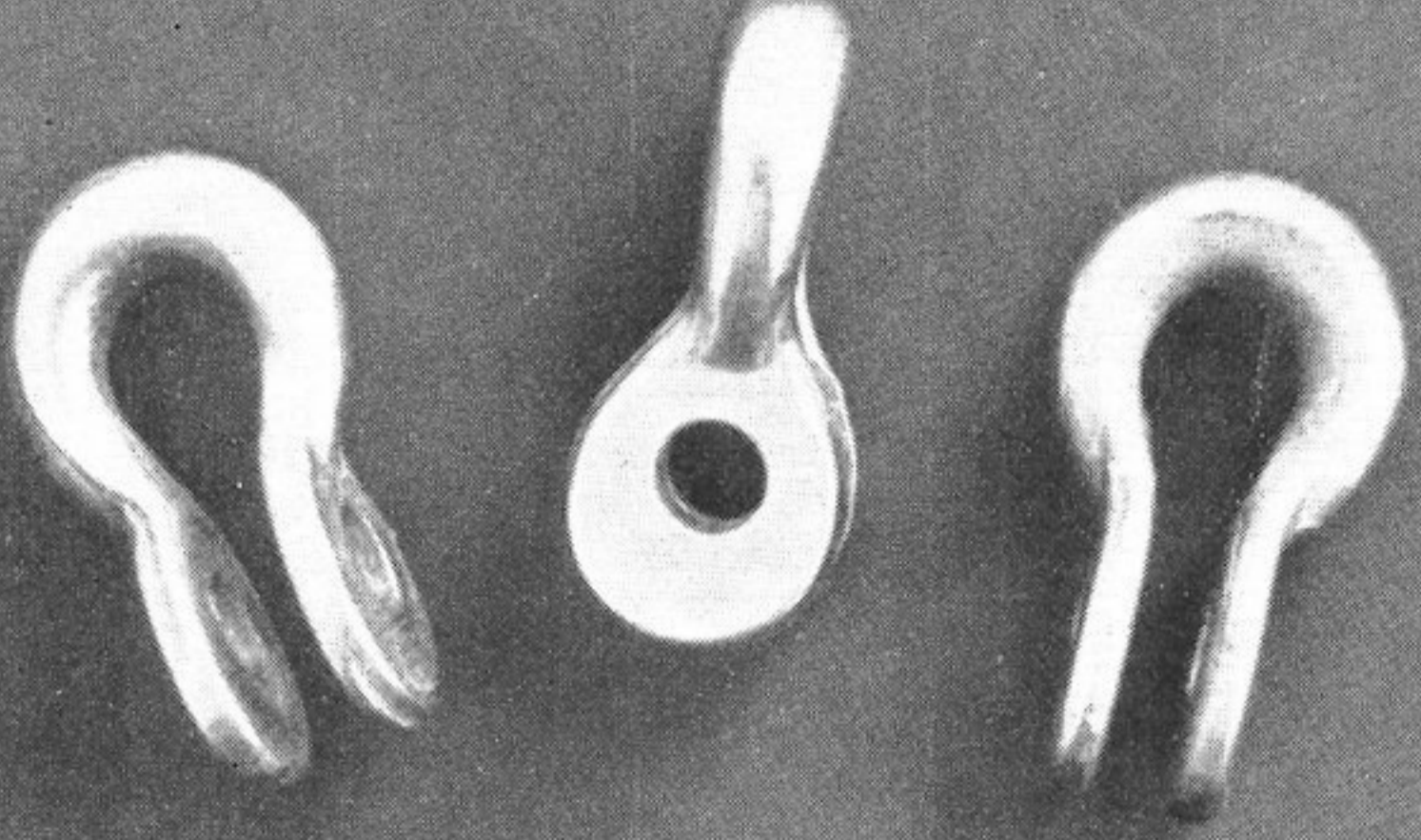
BARCALO-BUFFALO THIMBLES & SHACKLES



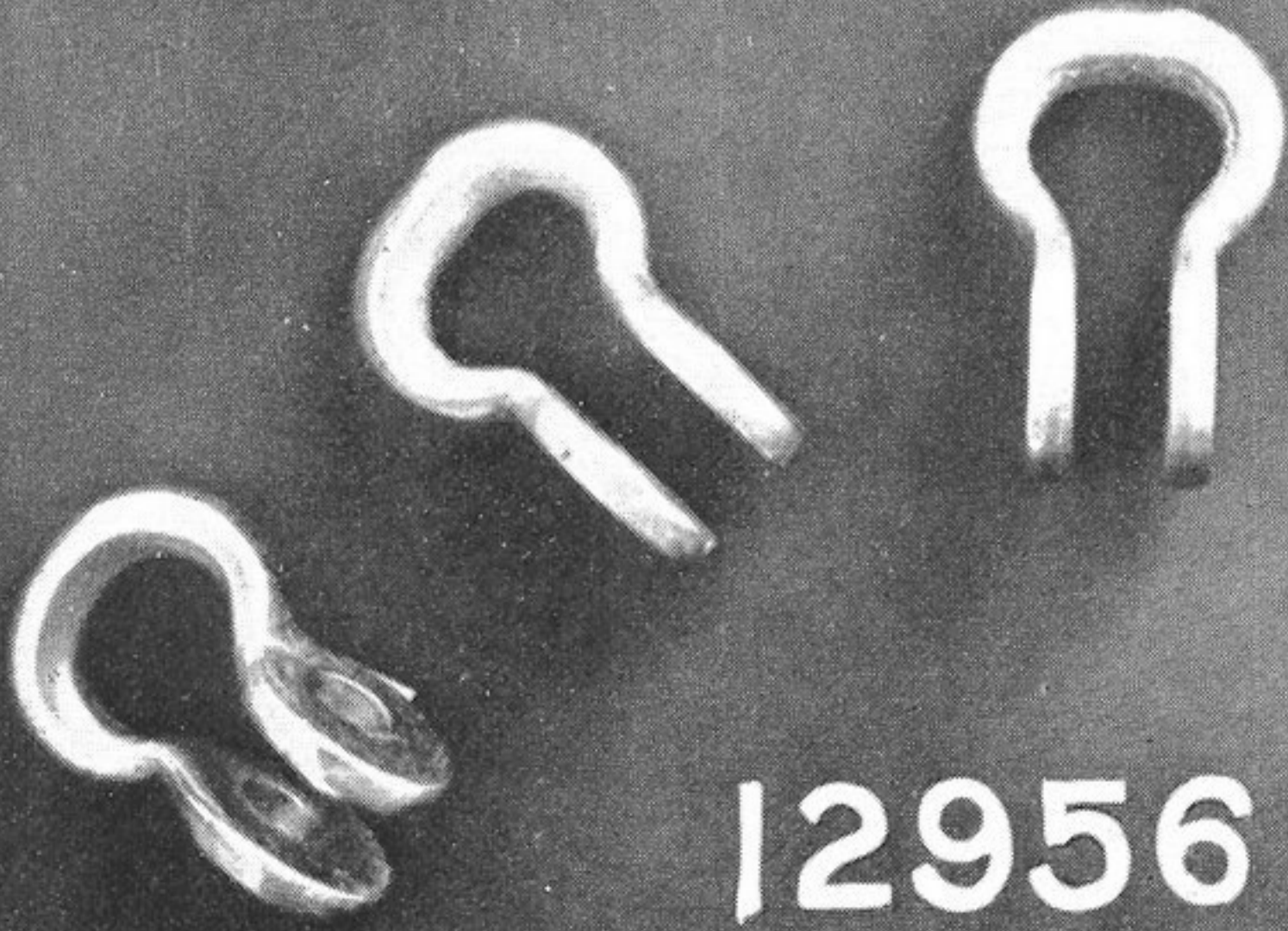
4378



13135



5535



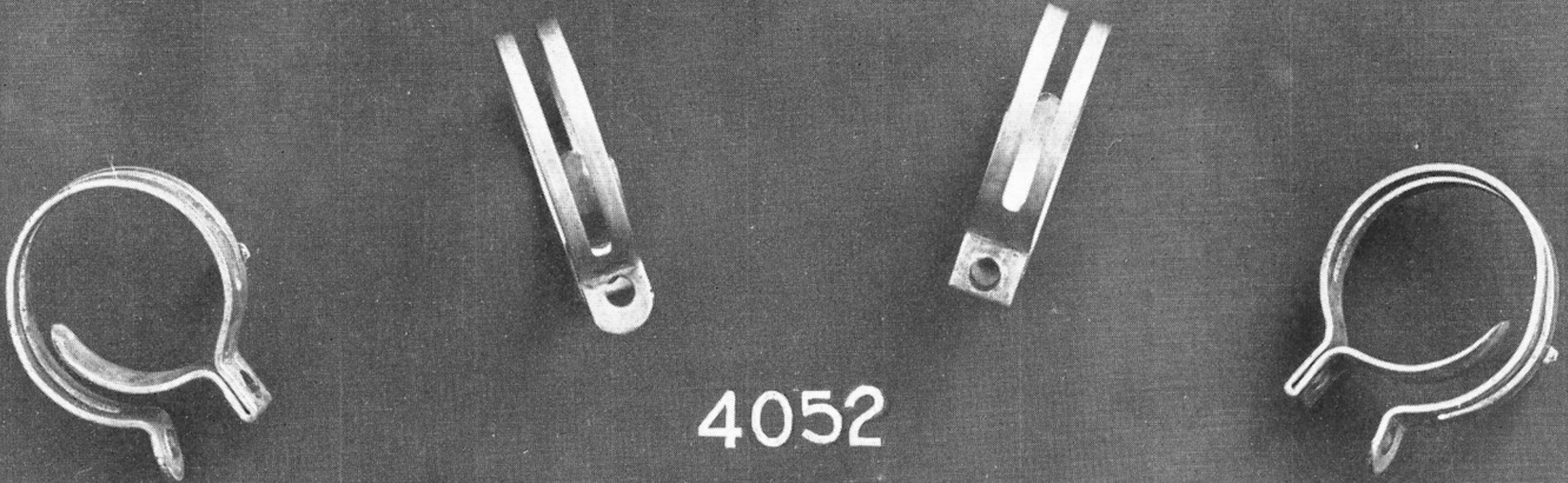
12956



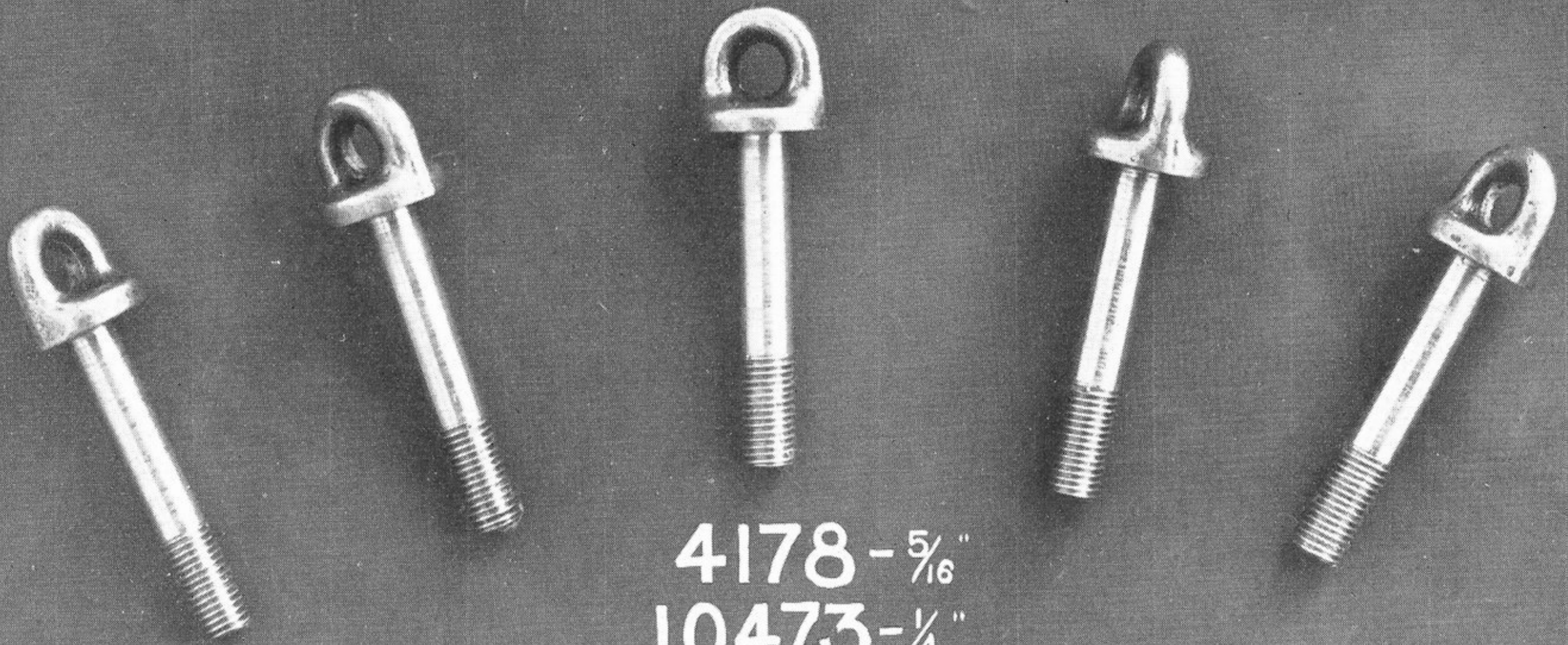
4379

BARCALO-BUFFALO

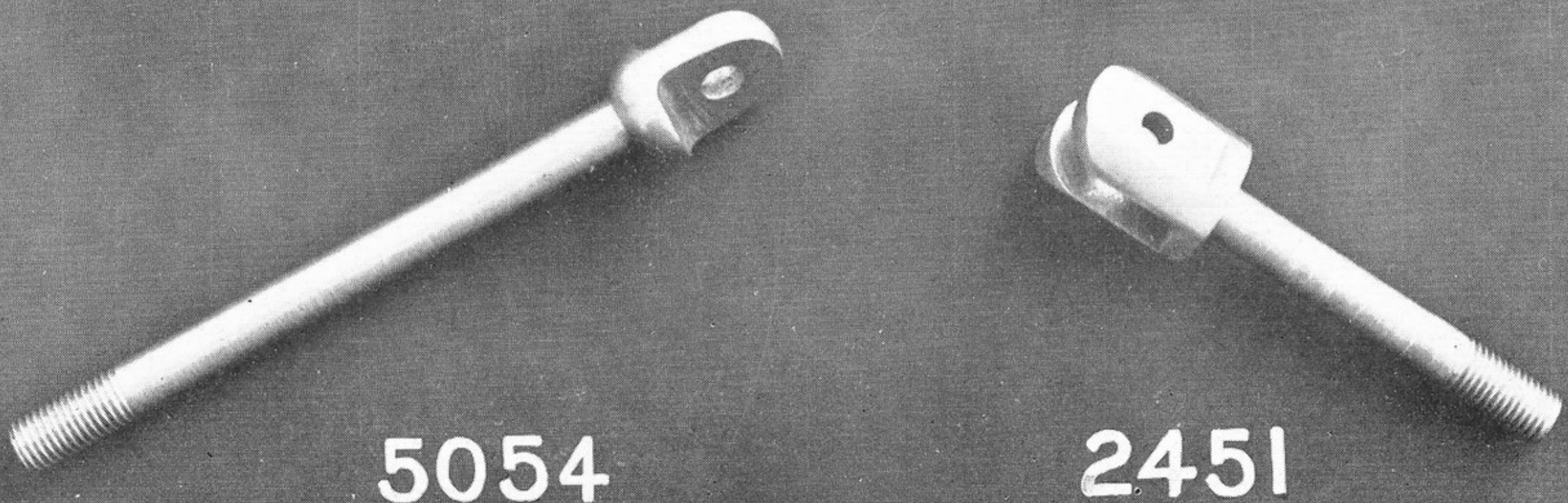
HOSE CLAMPS & EYE BOLTS



4052



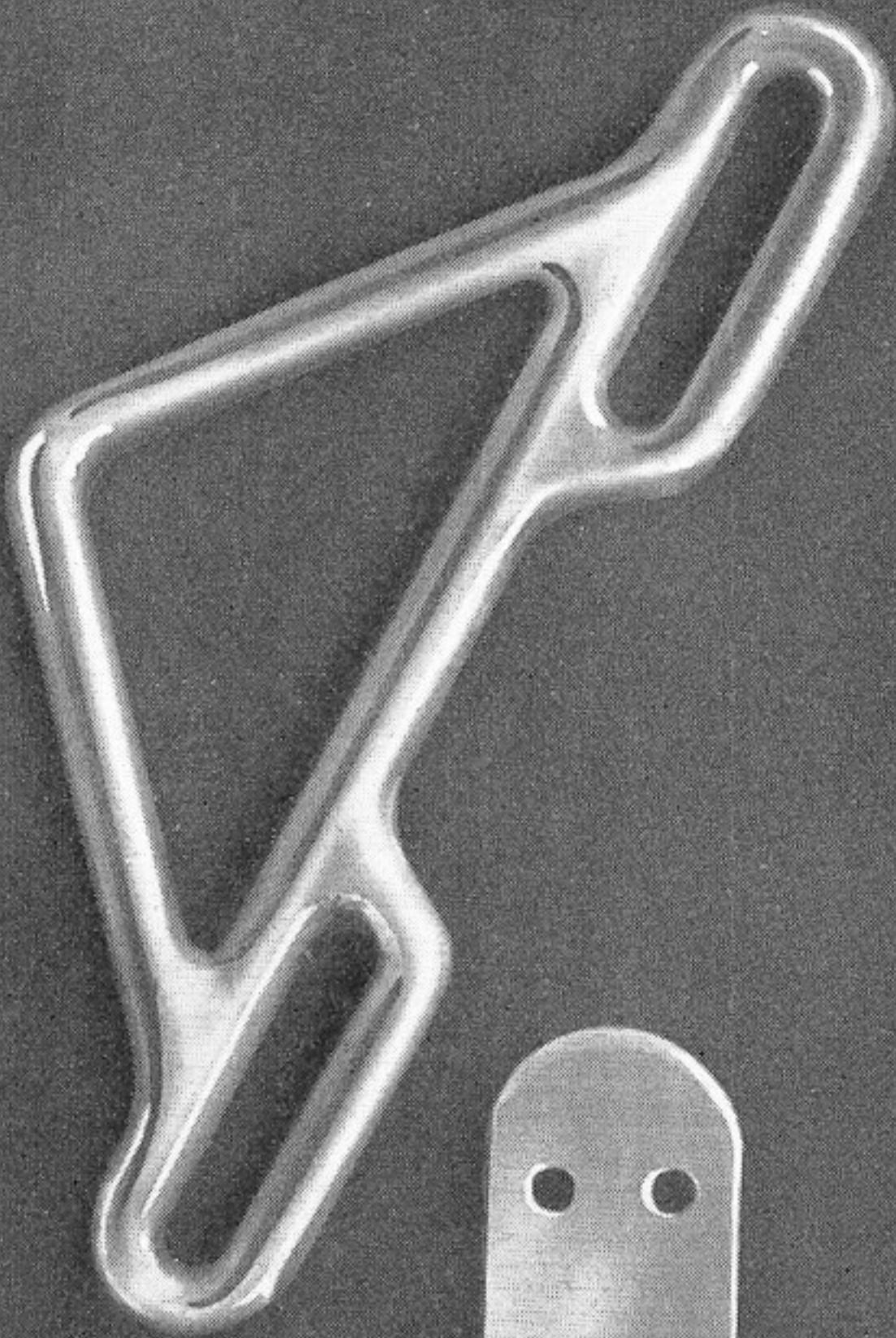
4178 - $\frac{5}{16}$ "
10473 - $\frac{1}{4}$ "



5054

2451

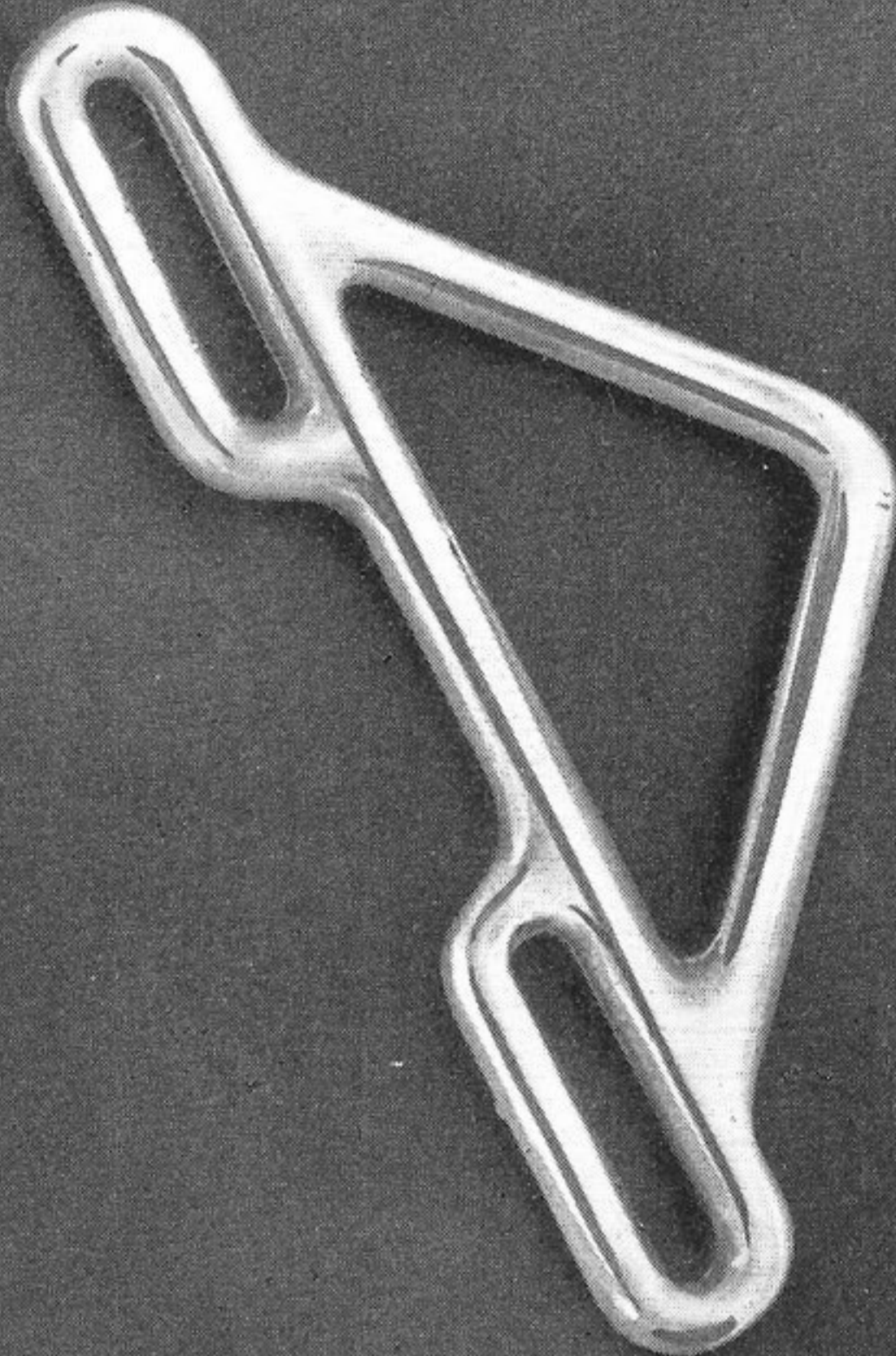
**BARCALO-BUFFALO
SAFETY BELT CATCHES**



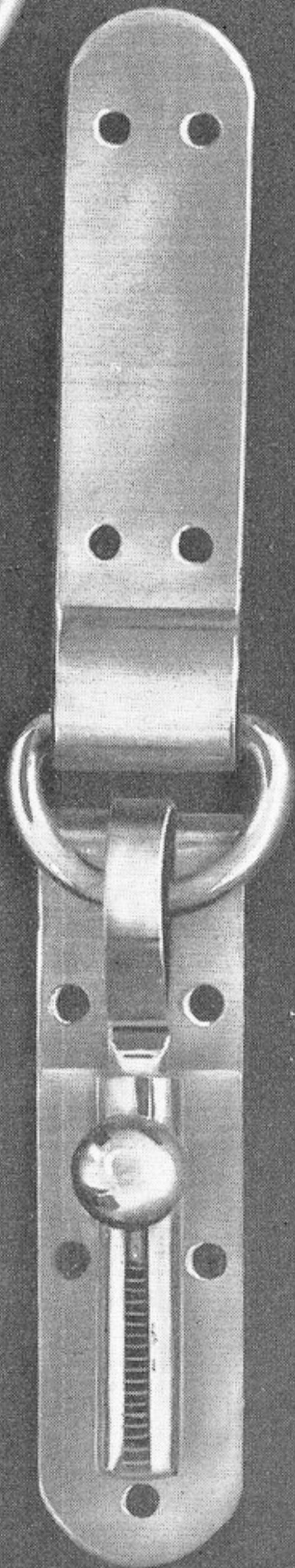
1275



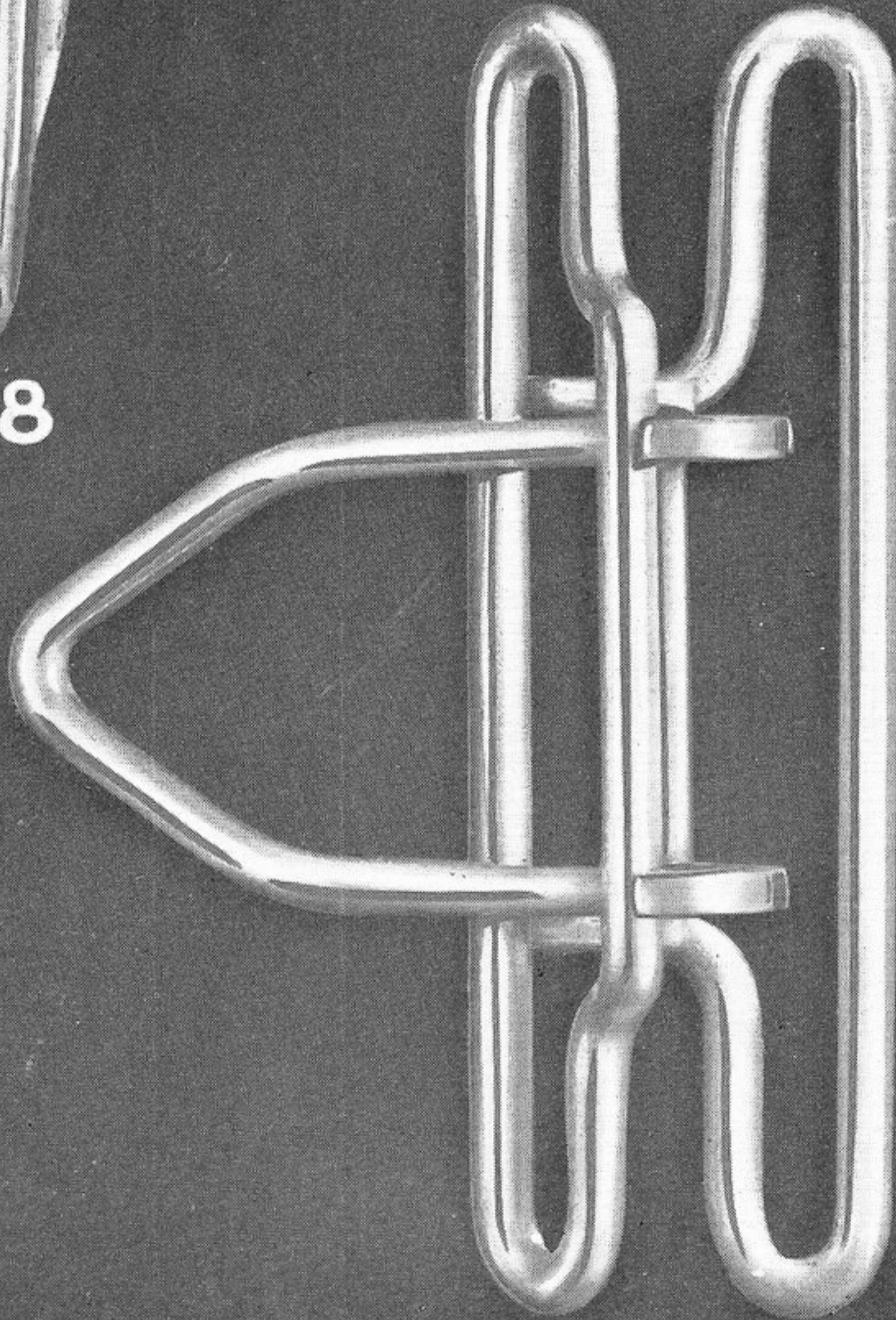
1268



1275

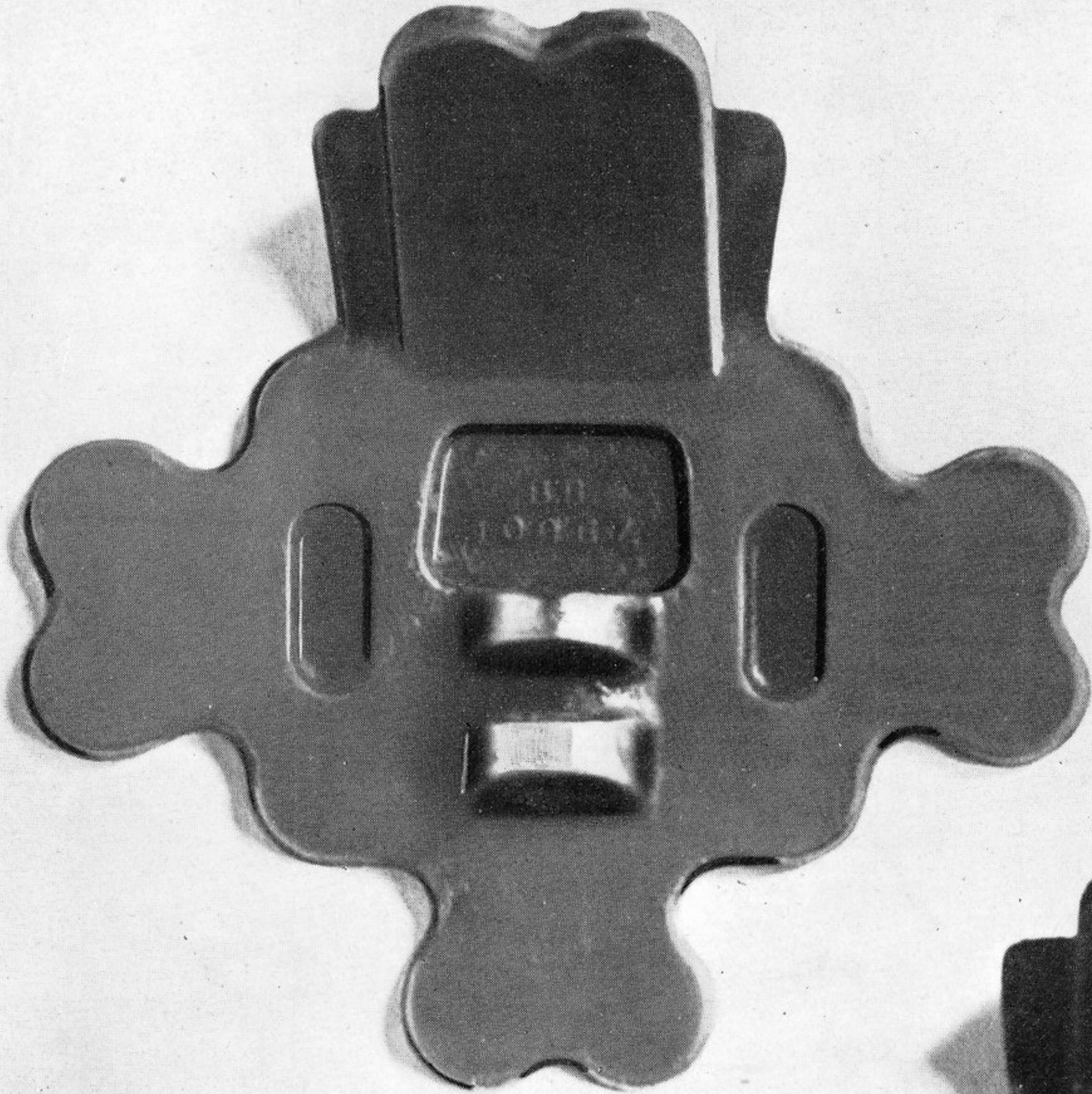


13587

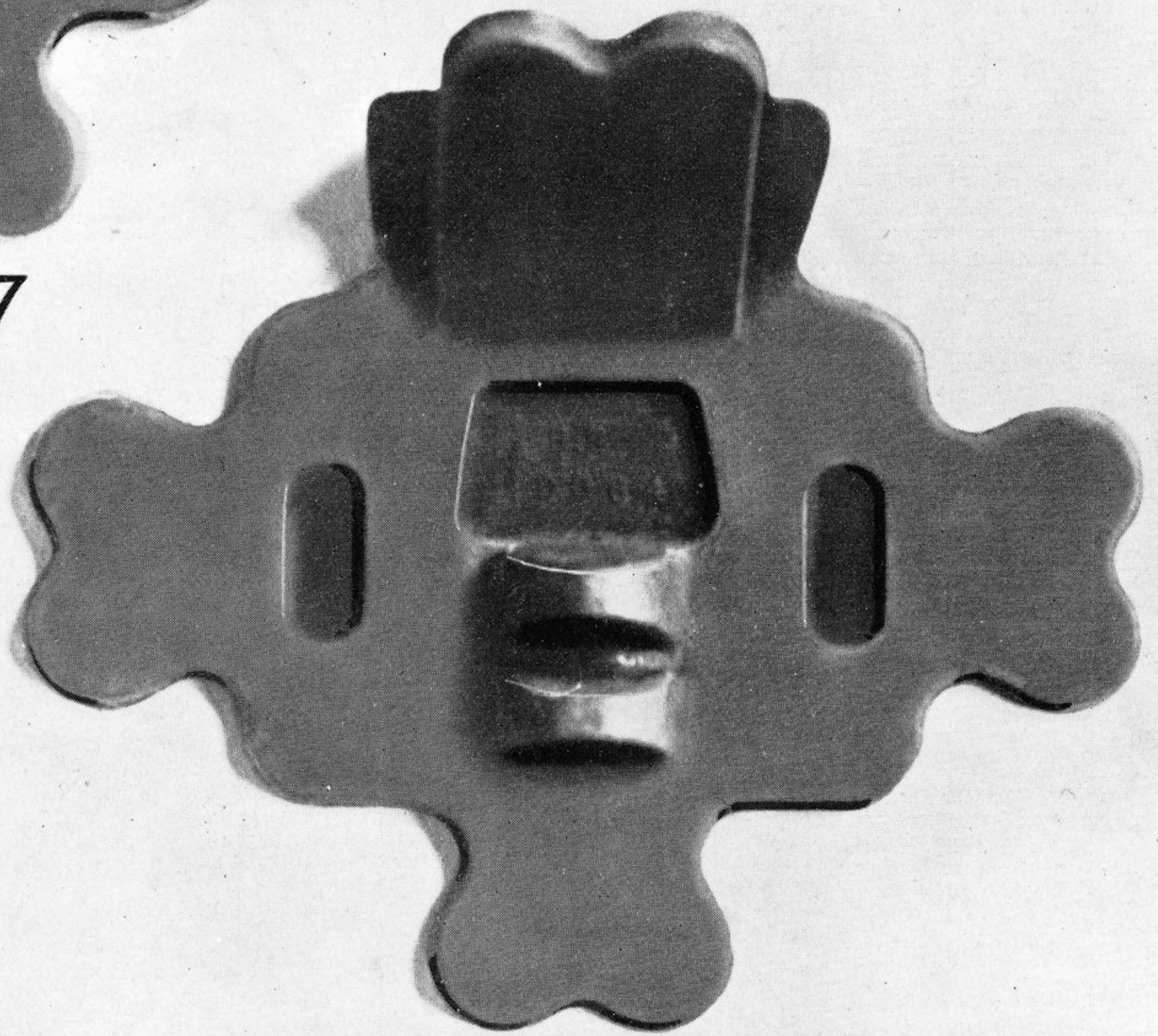


1963

BARCALO-BUFFALO HINGES

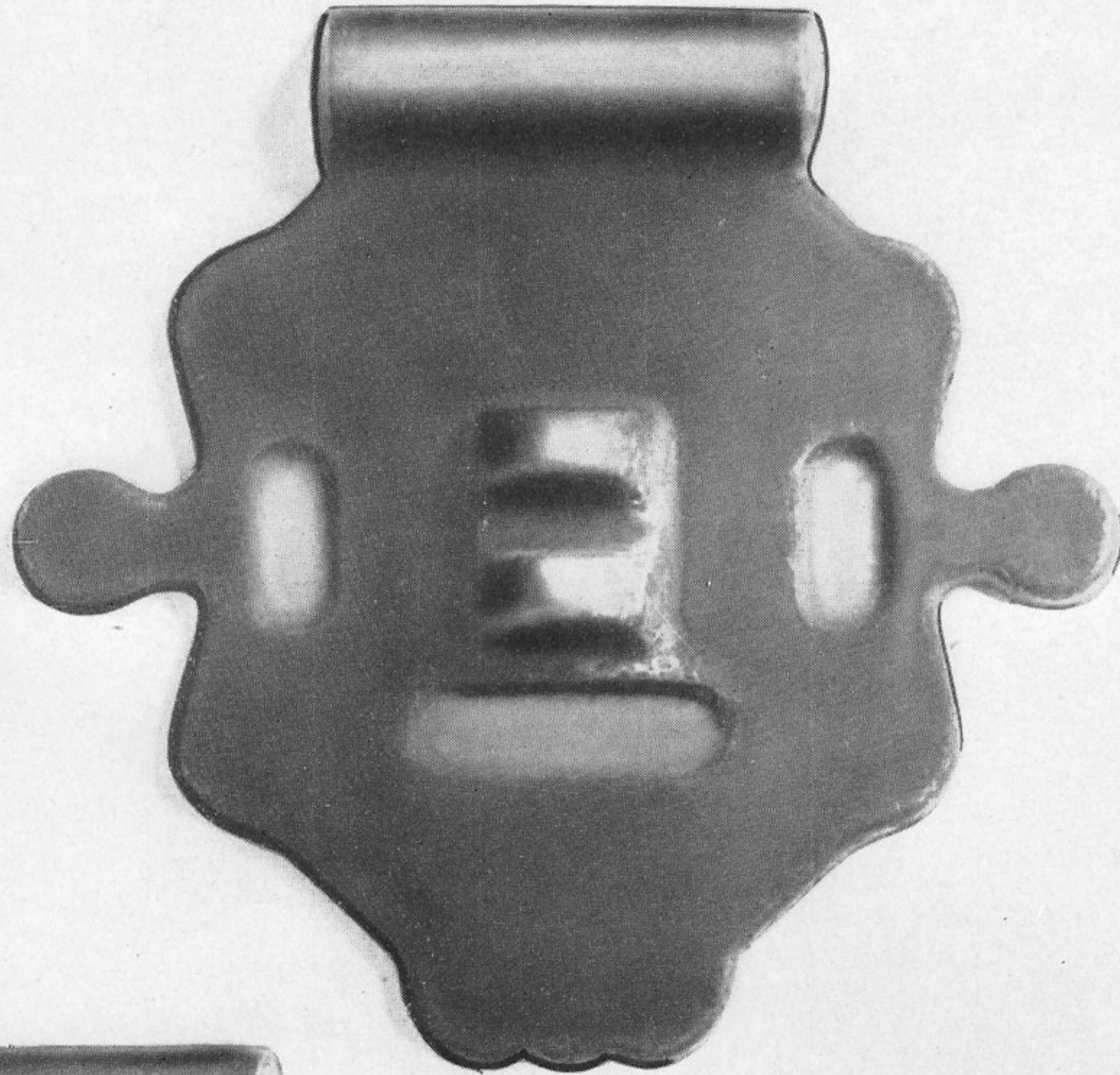


10067

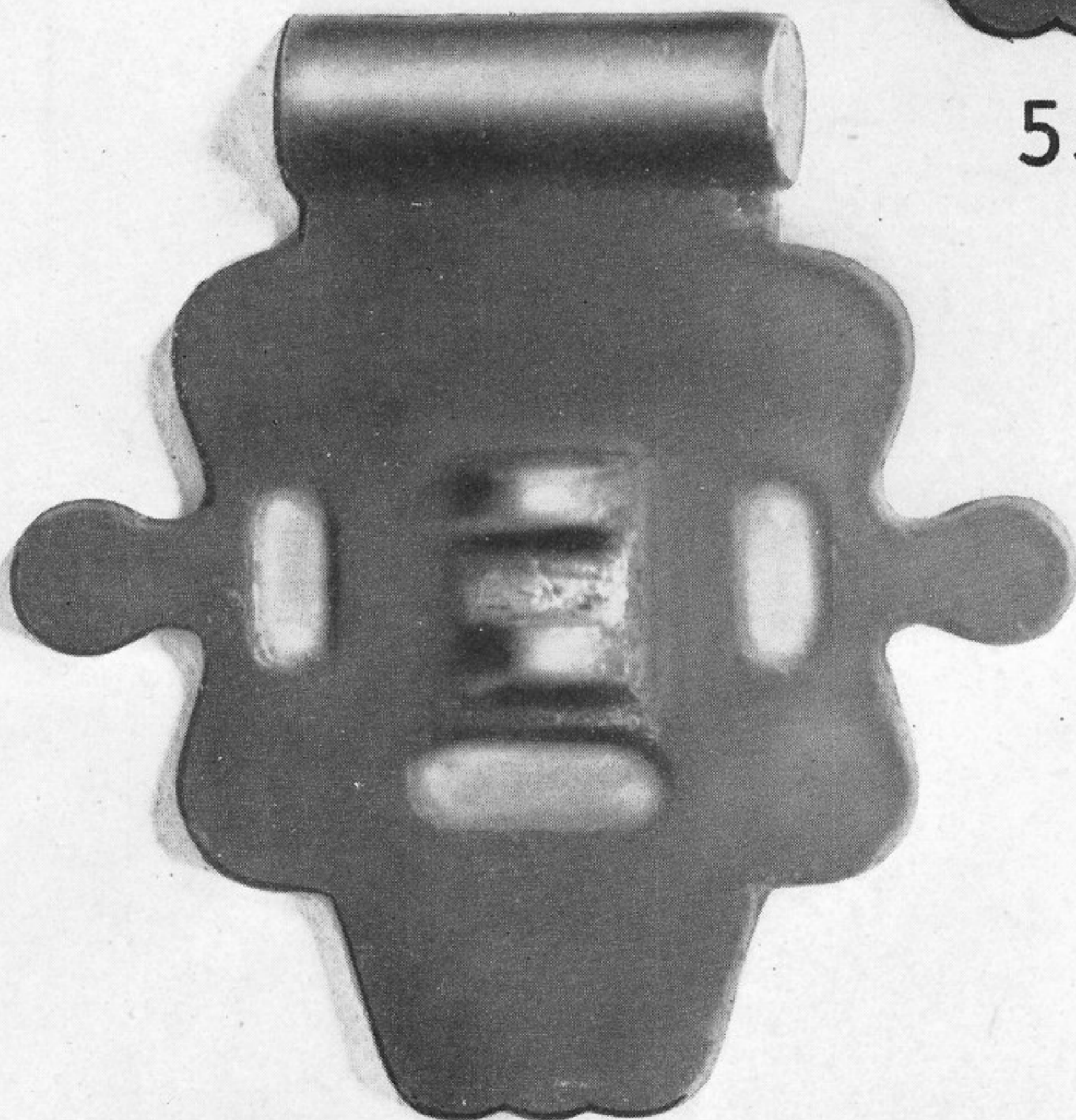


10064

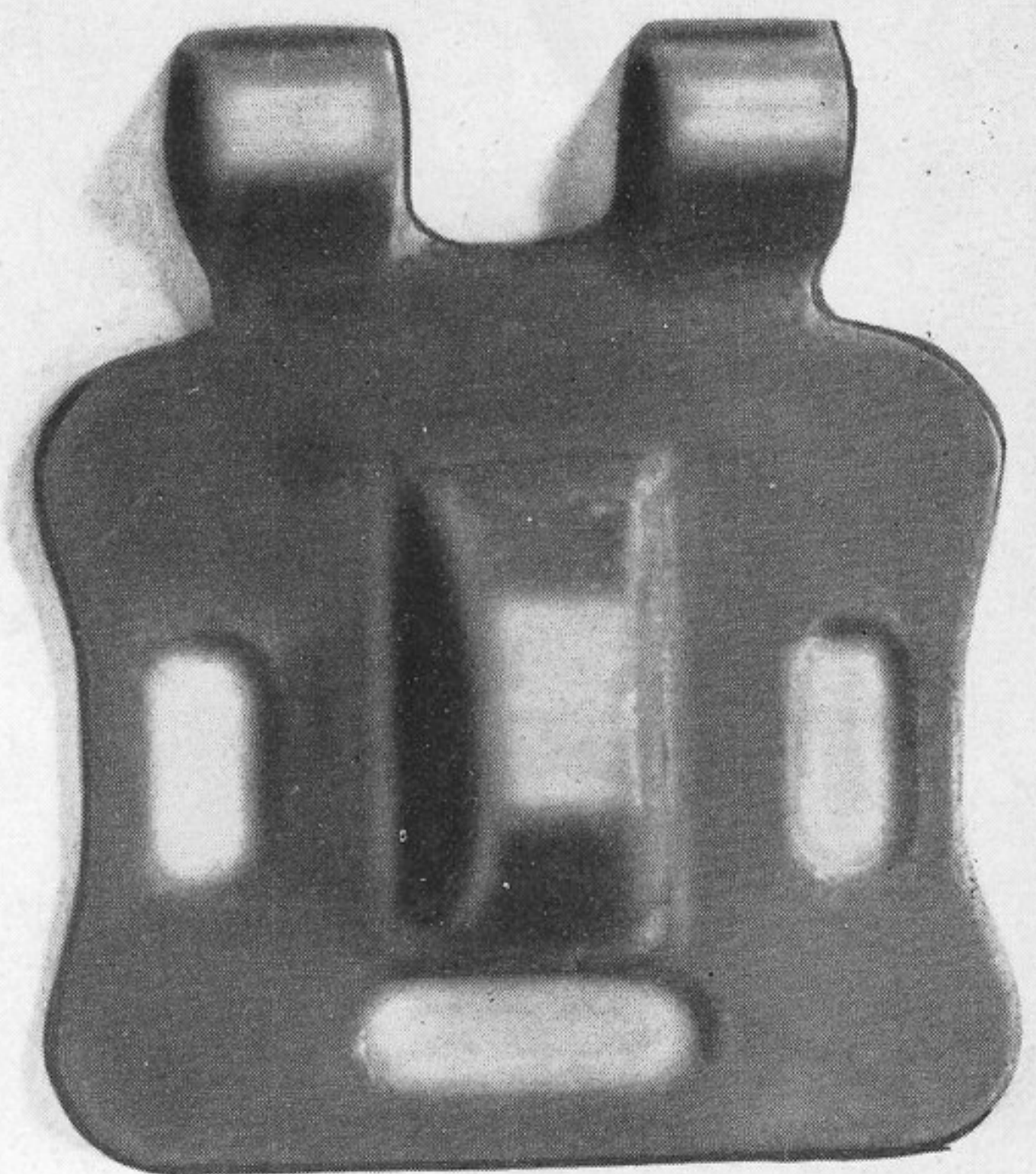
BARCALO-BUFFALO HINGES



5598



5597



10310

BARCALO-BUFFALO

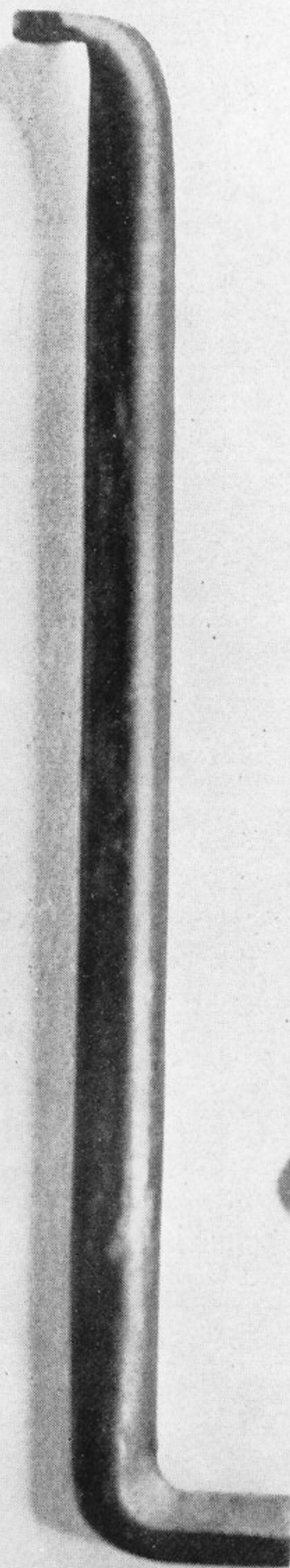
MISCELLANEOUS



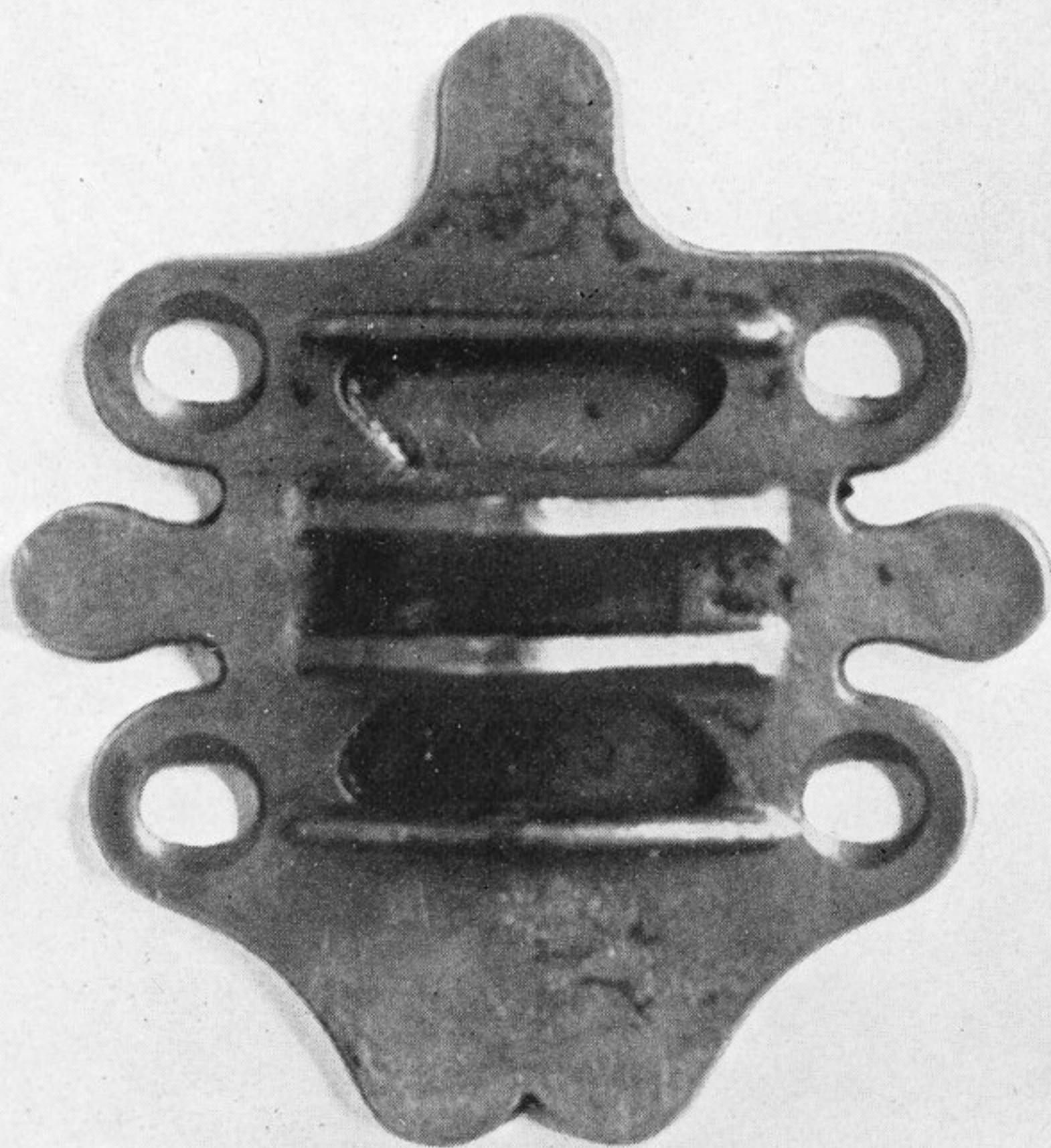
14533



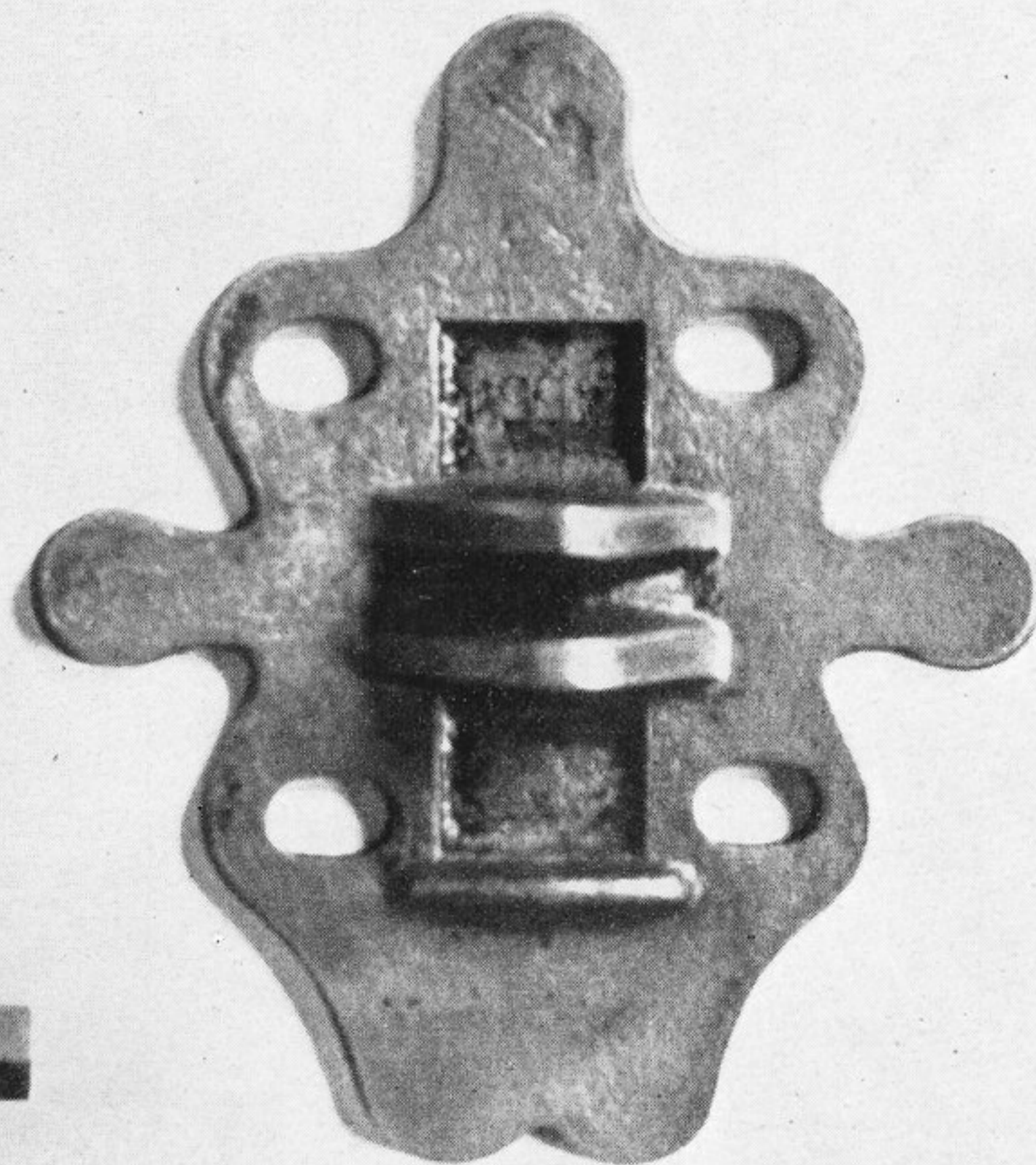
14533



42538

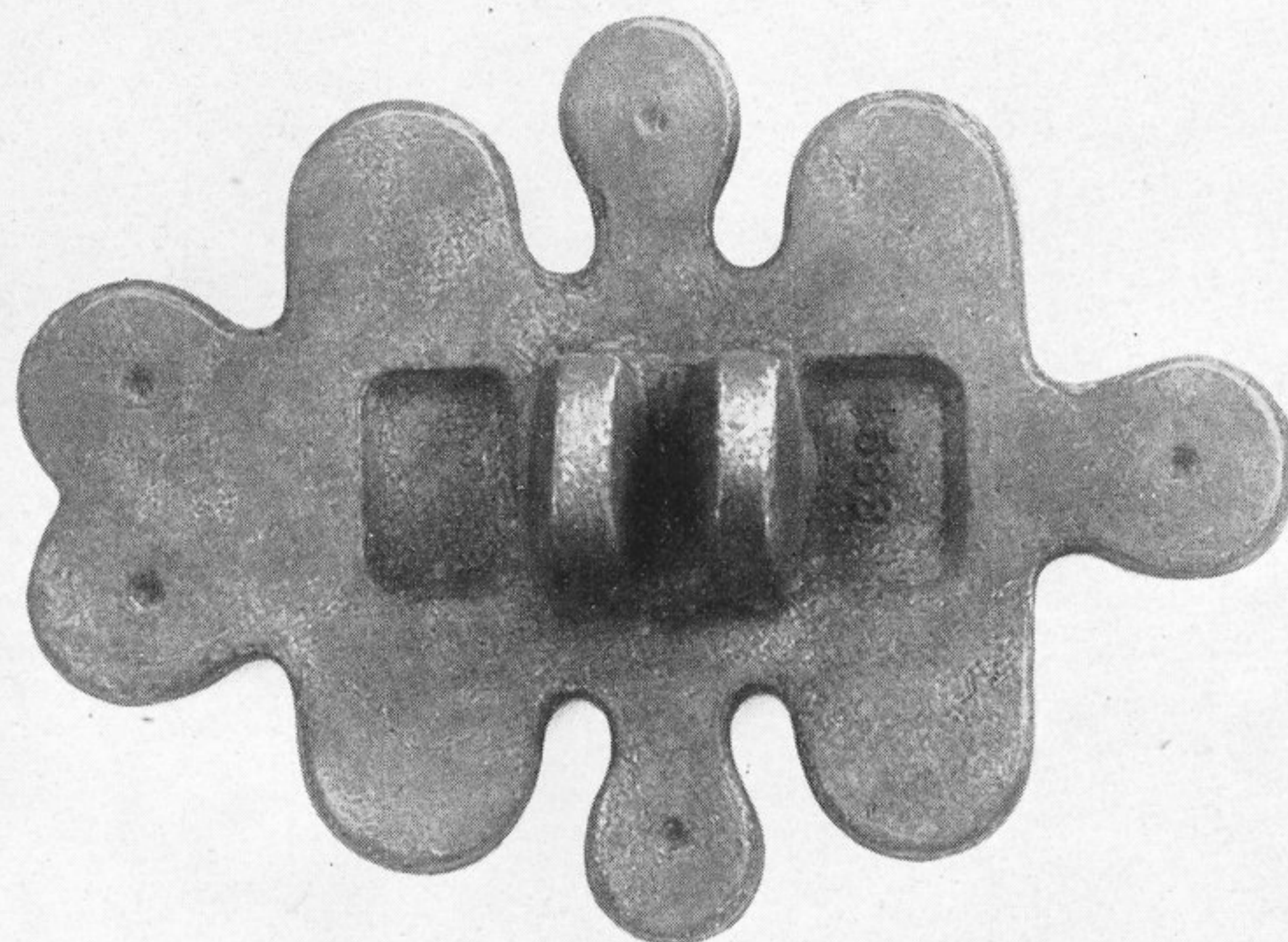


14555

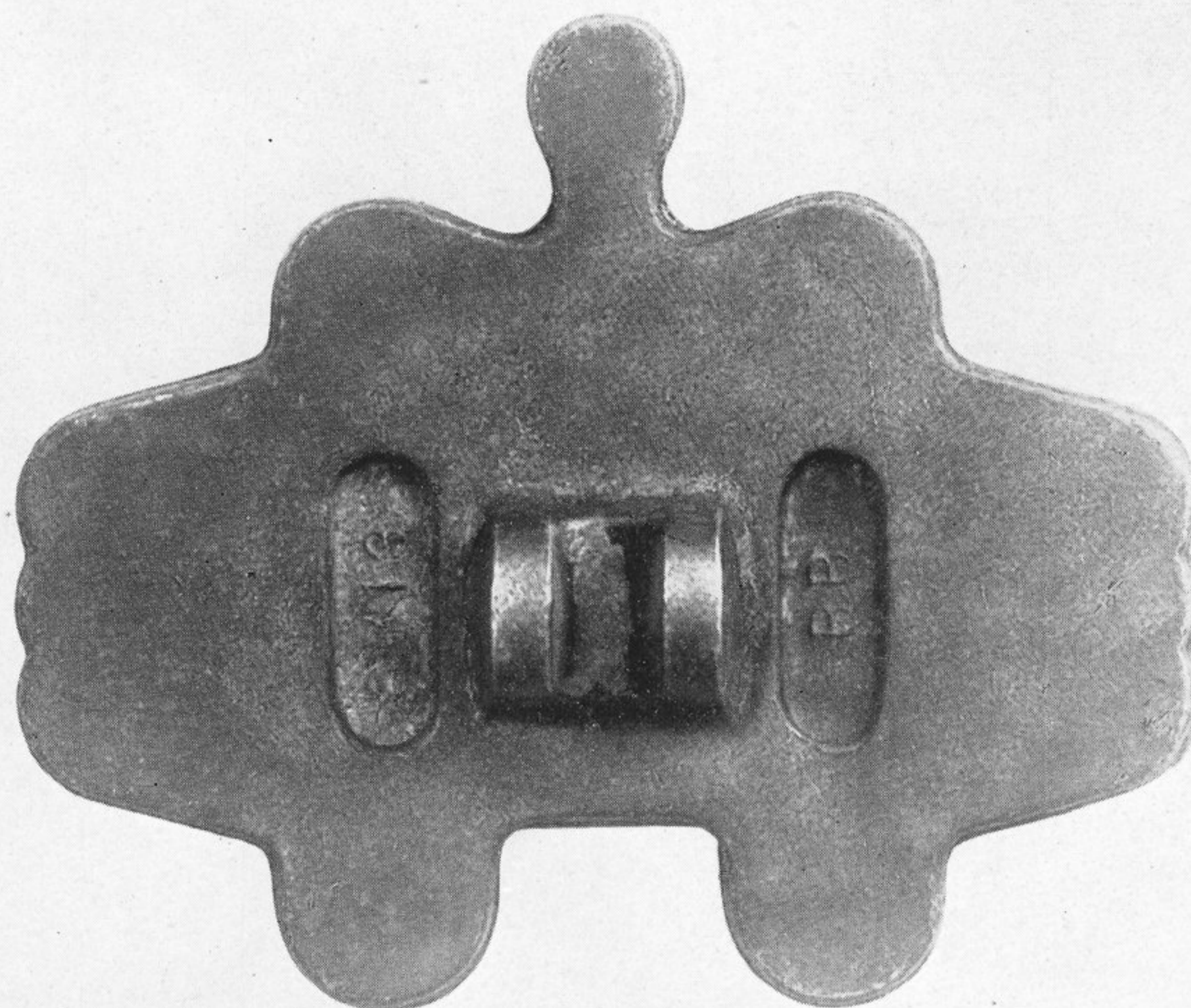


14554

BARCALO - BUFFALO
MISCELLANEOUS



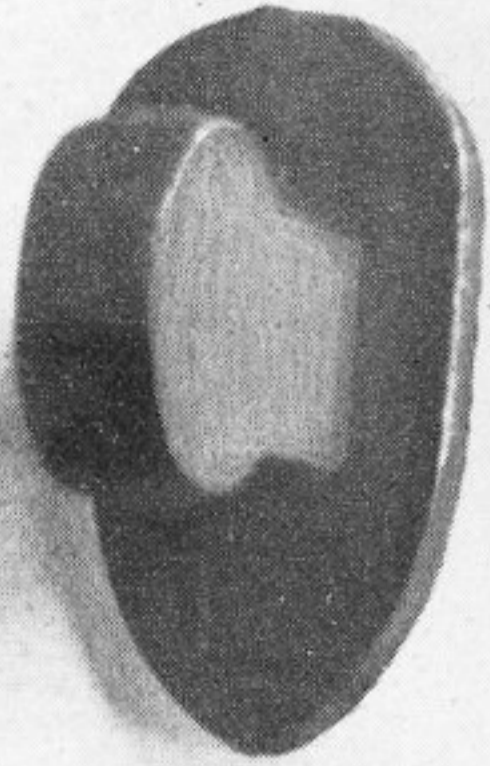
4583



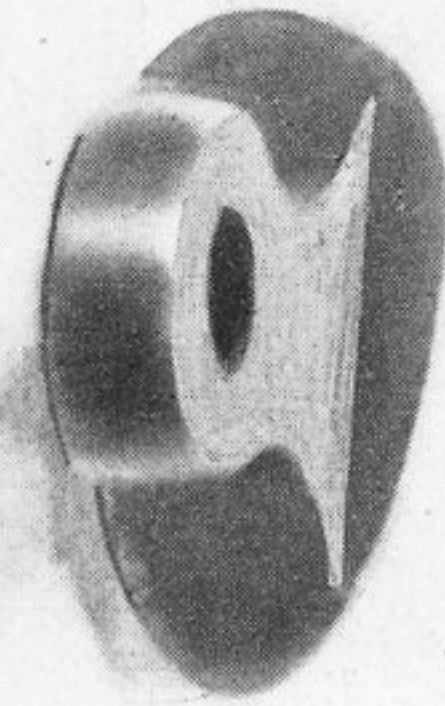
6713

BARCALO-BUFFALO

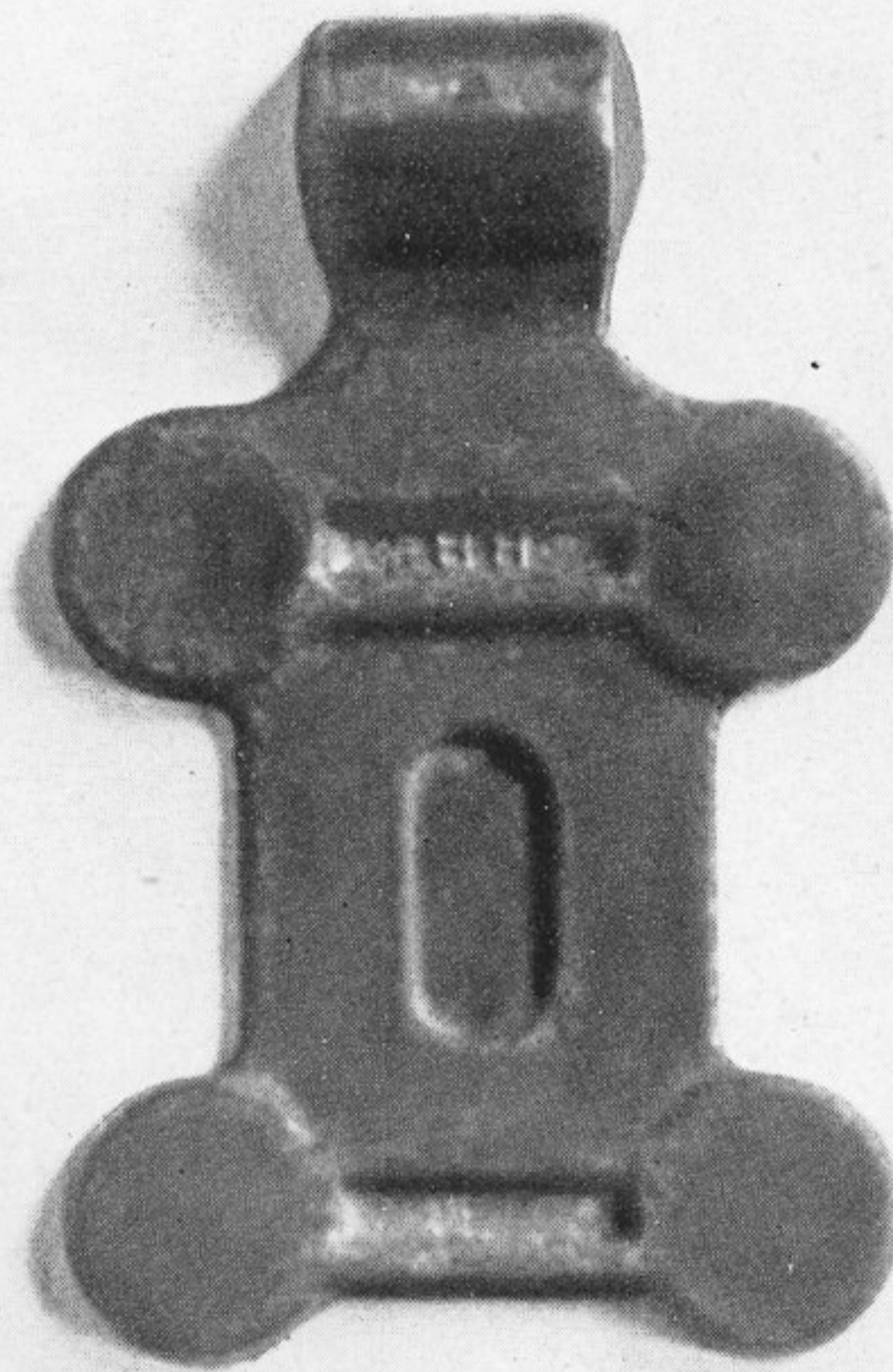
STRUT ENDS & HINGE



12247



12247

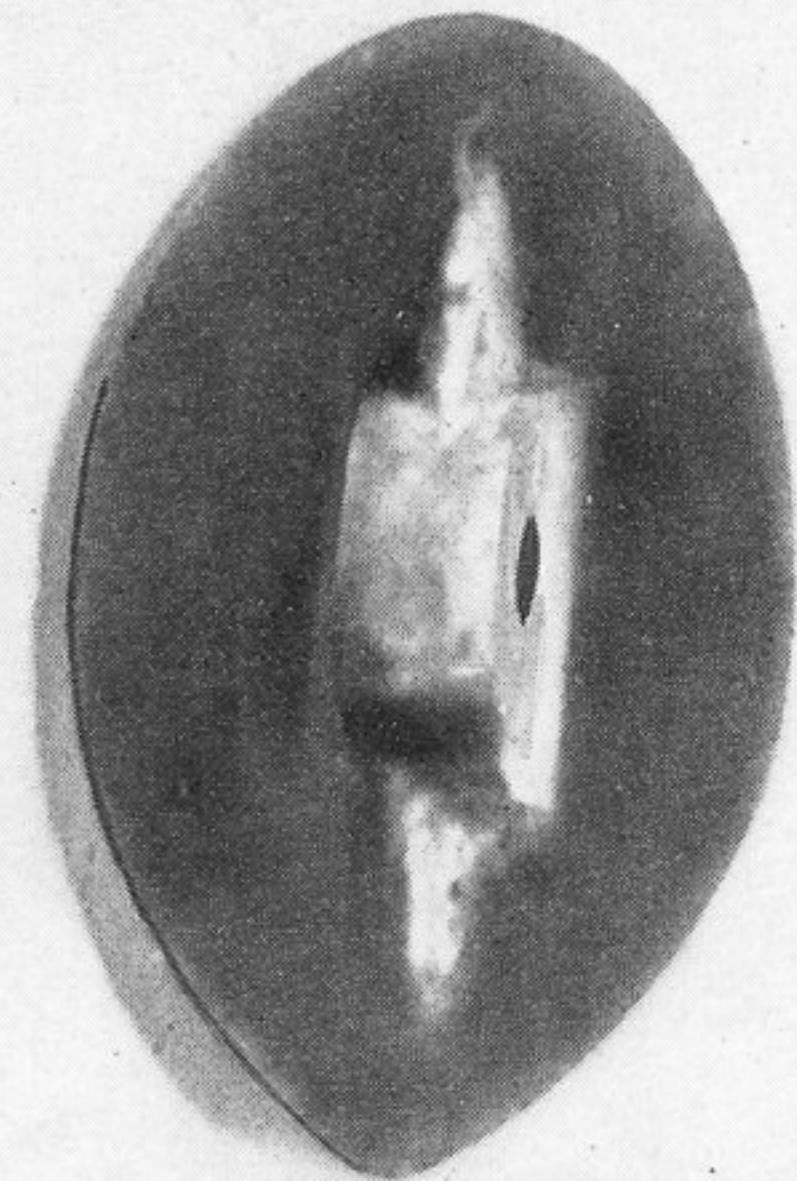


10325

10165



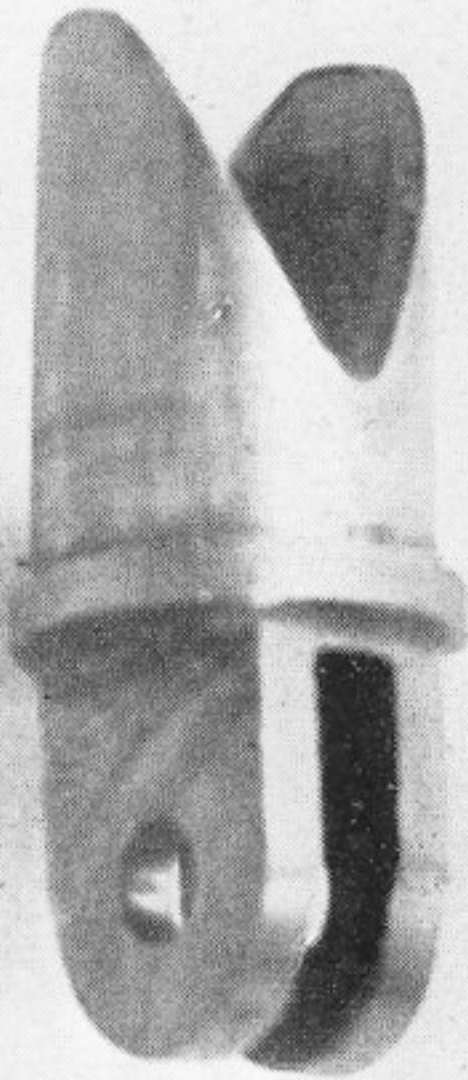
7669



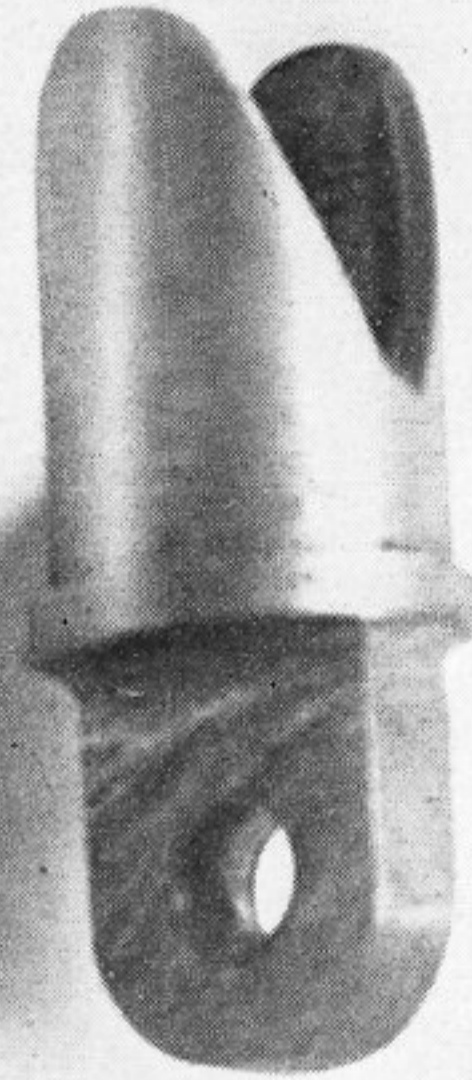
12778

BARCALO-BUFFALO

STRUT ENDS & SPIDER



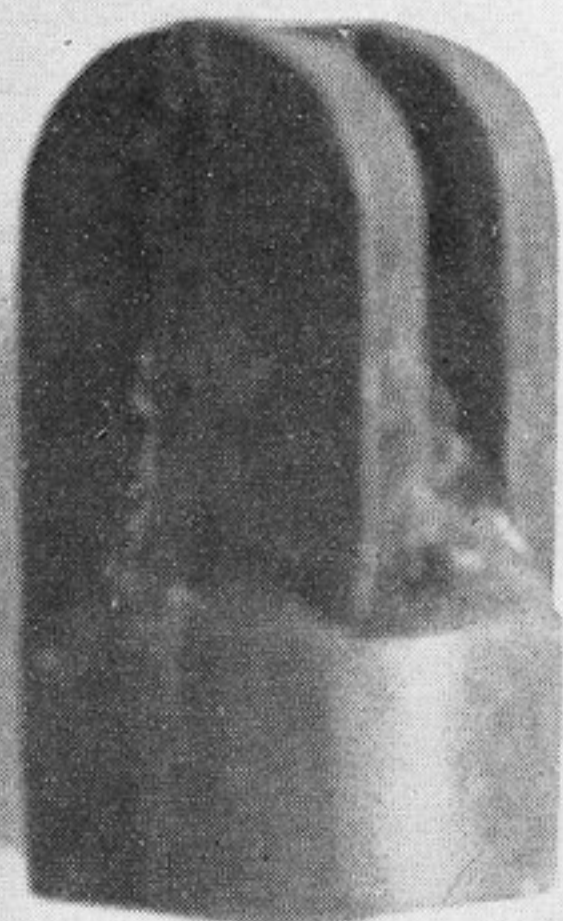
11158



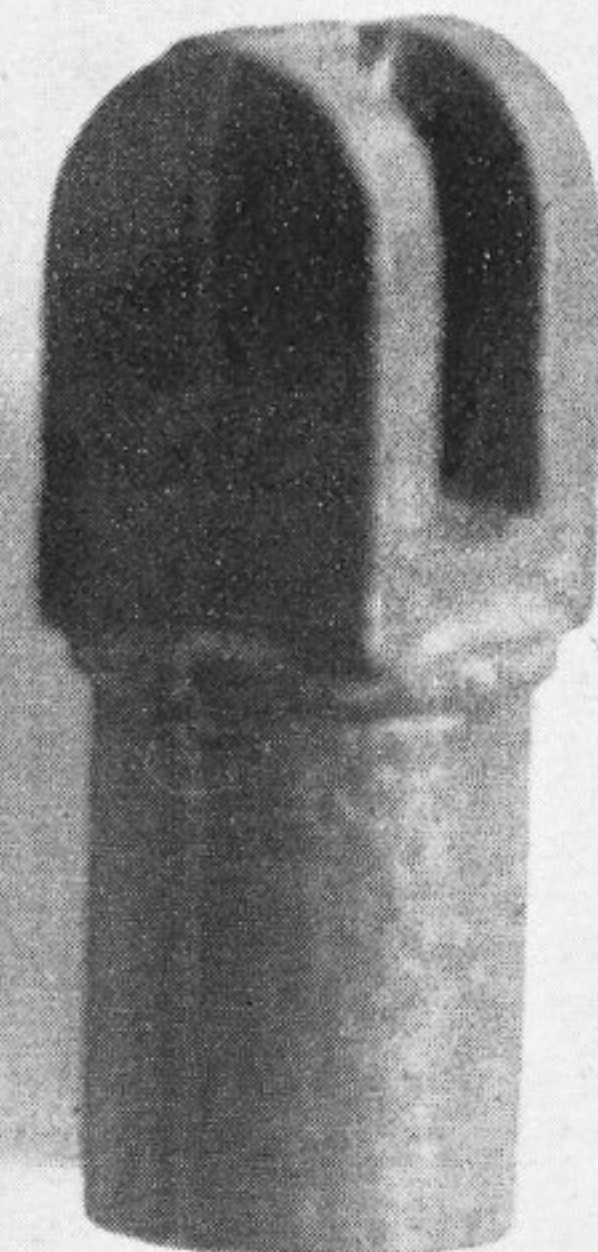
12630



42604

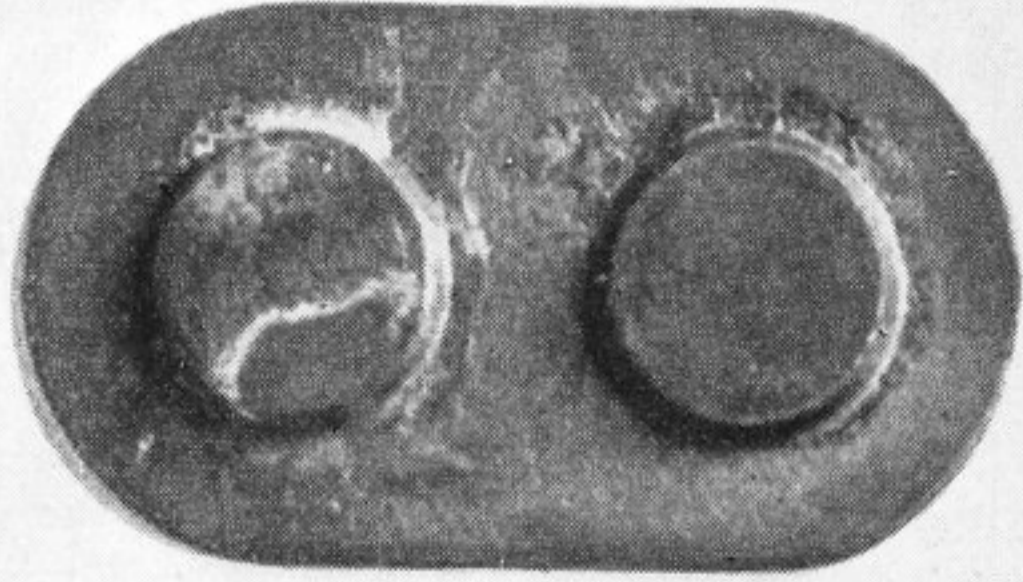


10028

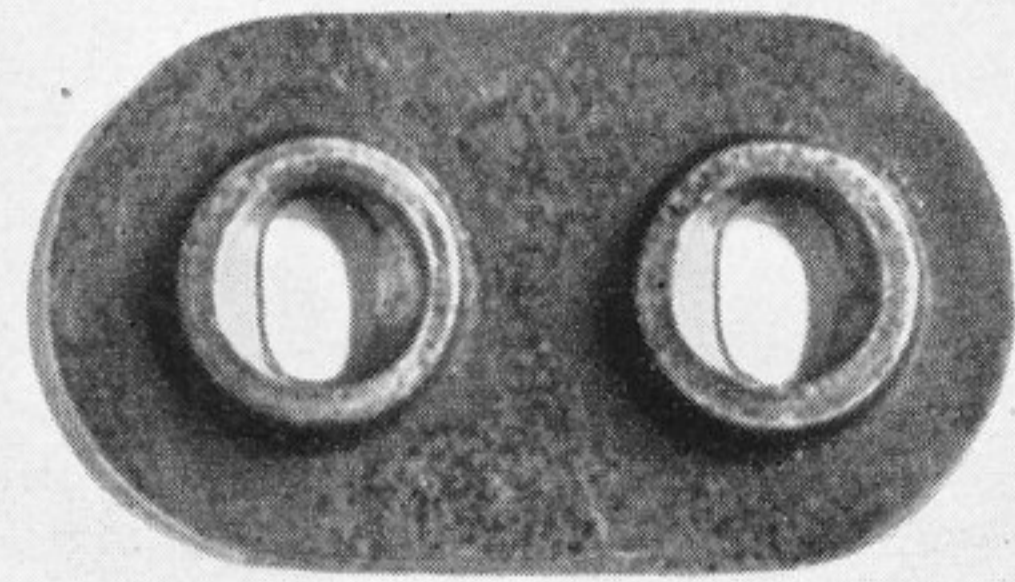


15242

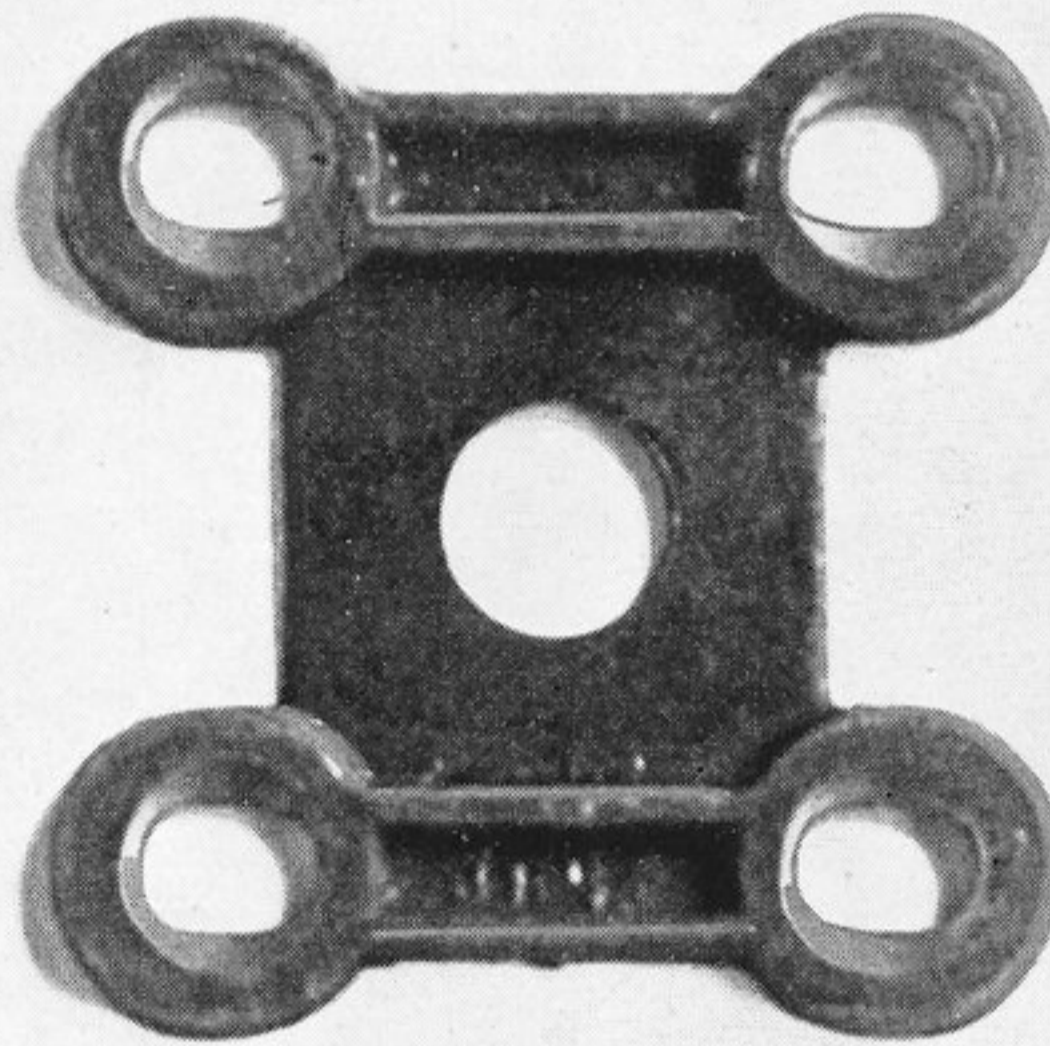
BARCALO-BUFFALO WASHER PLATES



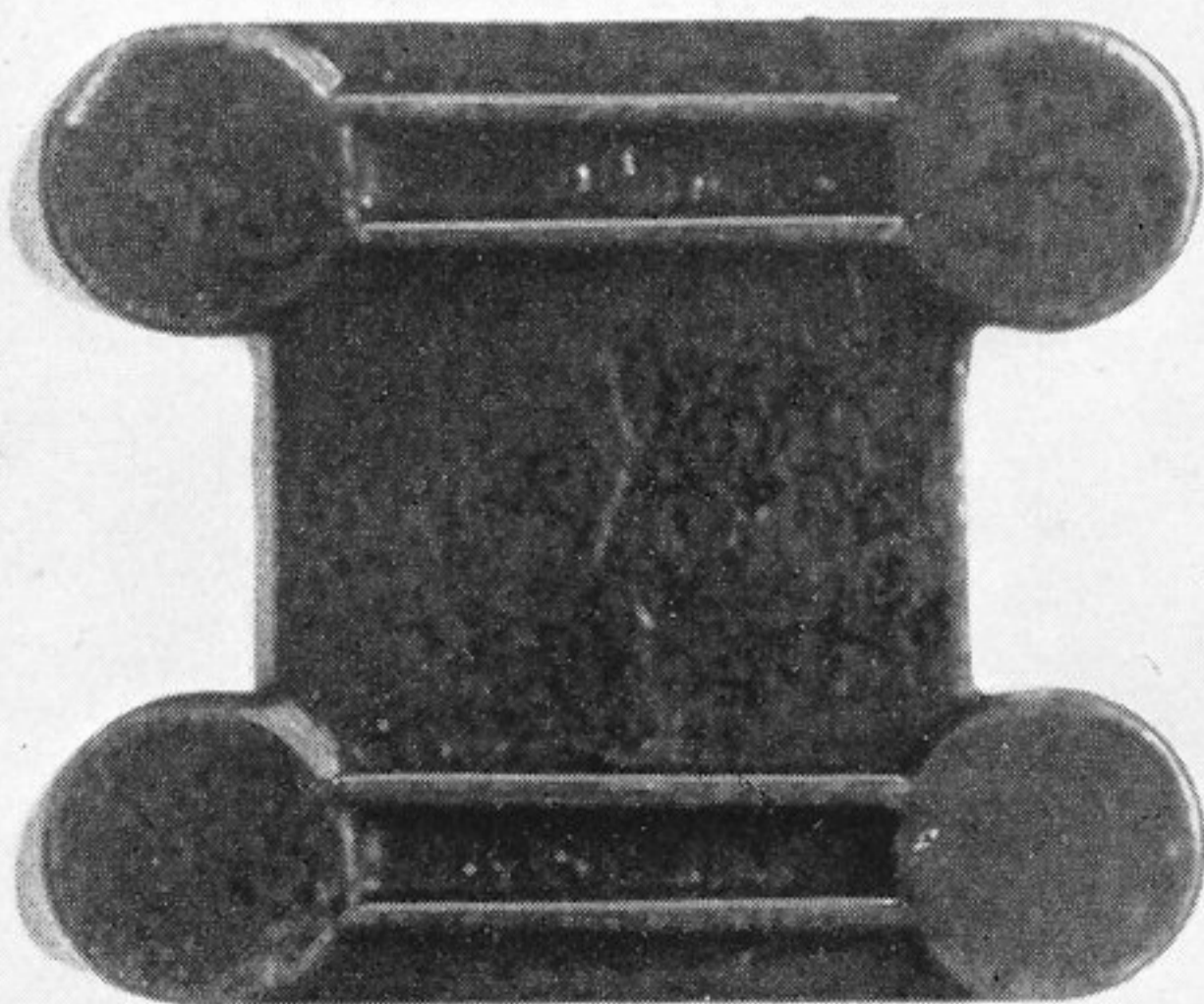
4590



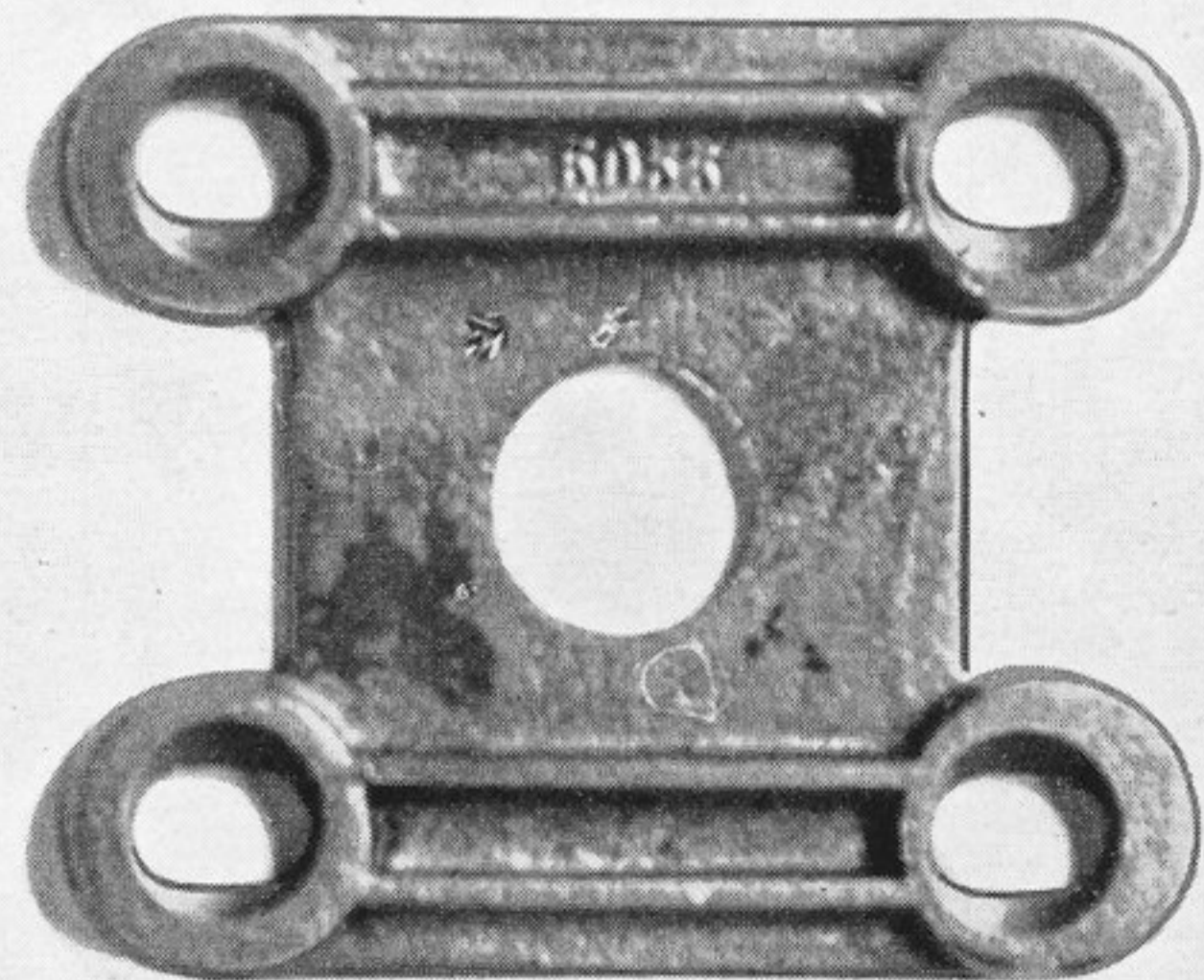
4590



4591



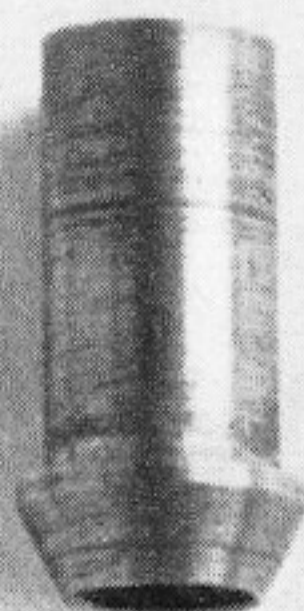
5055



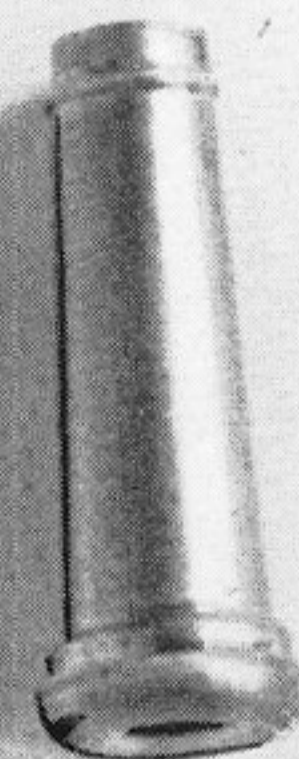
5055

BARCALO-BUFFALO

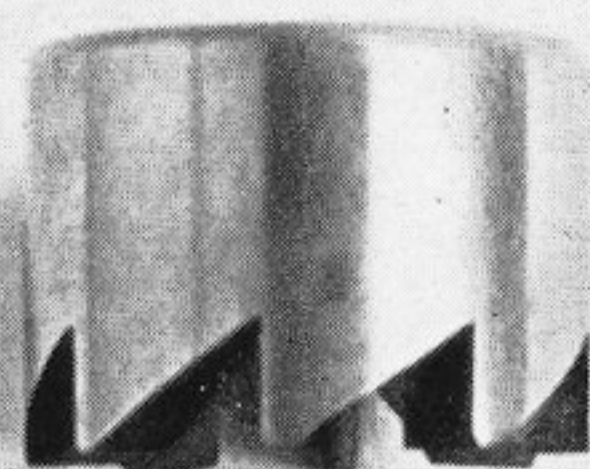
MISCELLANEOUS



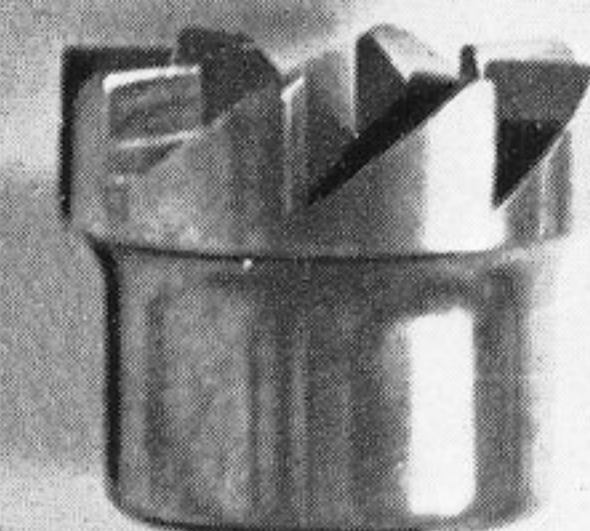
14658



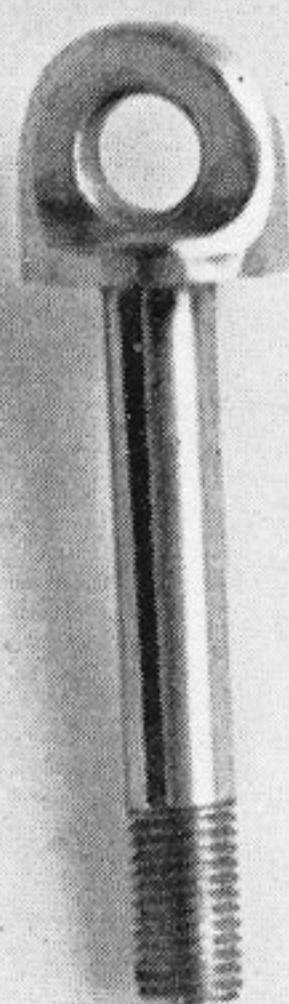
12588



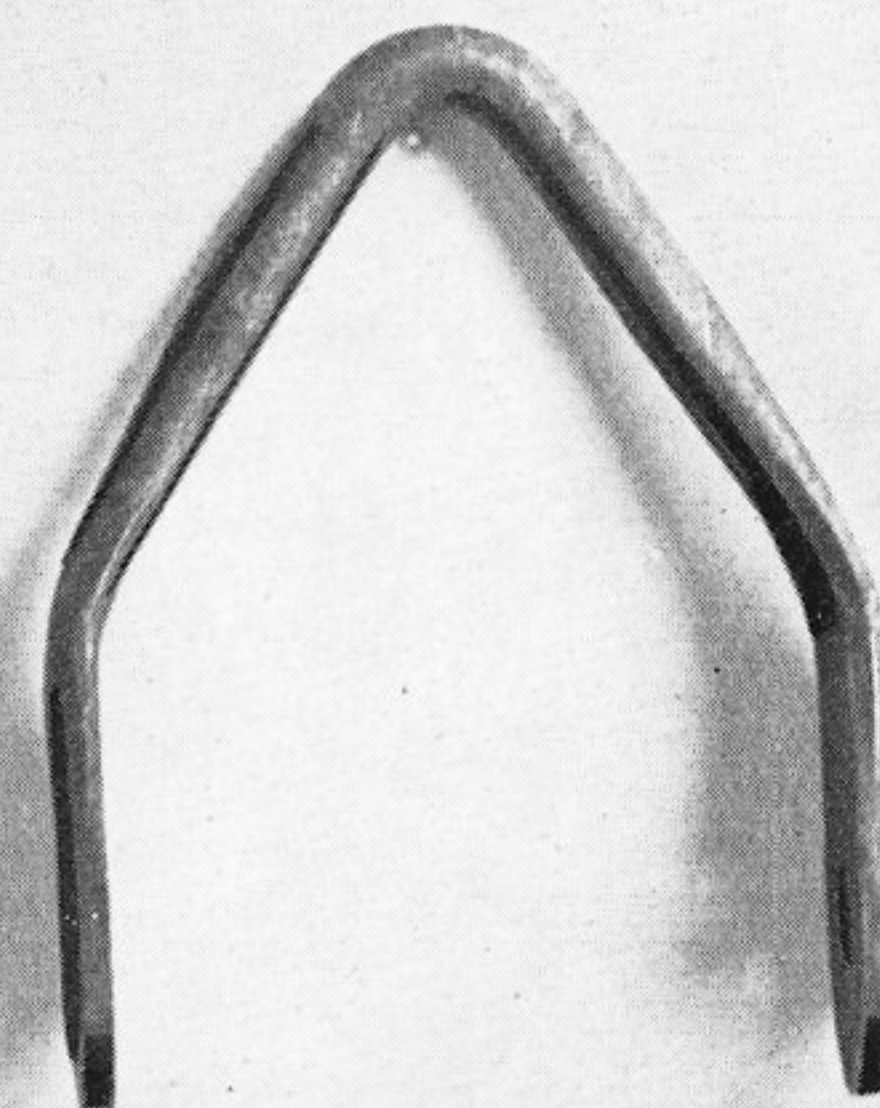
41962



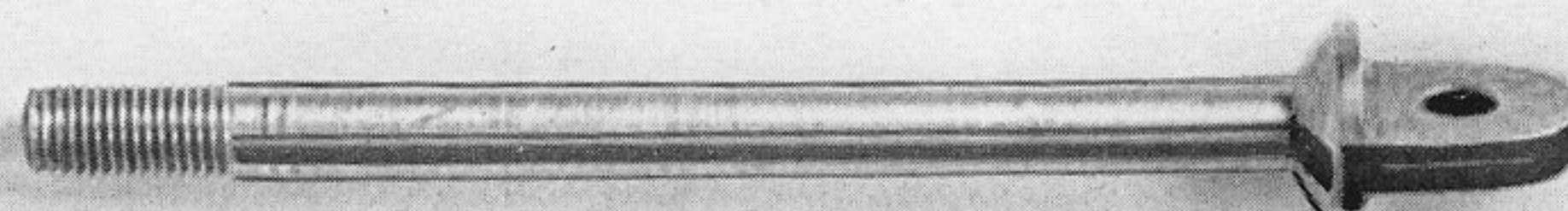
41963



4178



1186



5054

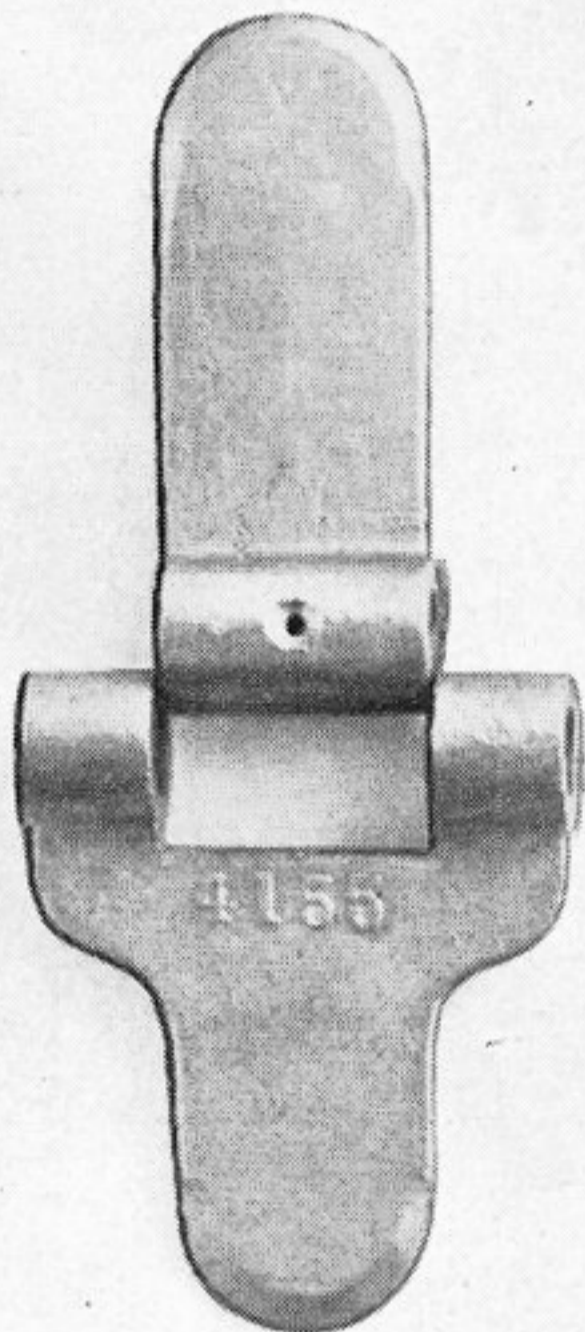
BARCALO-BUFFALO

MISCELLANEOUS

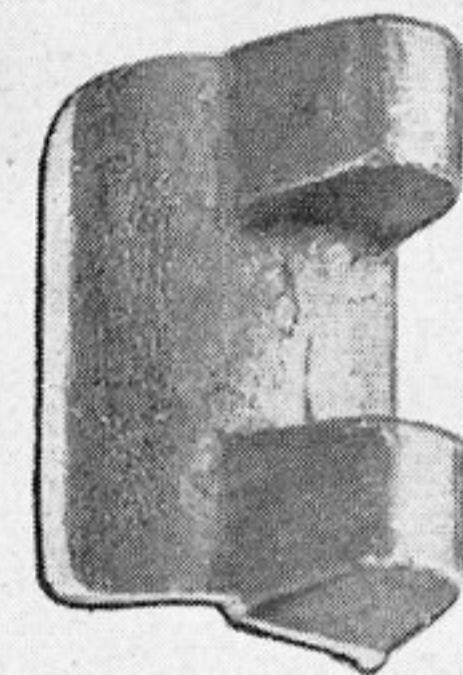


6375

4157



4155



6304



4690

blank page

Posted December 25, 2022
During Blizzard of 2022
Brian D. Szafranski
Elma, NY USA

Please do not reprint
for commercial gain